

**CHARITY - UNITY - FRATERNITY - PATRIOTISM**



# **KNIGHTS OF COLUMBUS**

**AWARDS, BADGES, & MORE**



**SCHOLASTIC PROMOTIONS, LTD.**

**AWARDS AND MORE**

**505 Uniondale Avenue**

**Uniondale, New York, 11553**

**Established 1967**

**phone (516) 538-0705**

**email: [awardsandmore@verizon.net](mailto:awardsandmore@verizon.net)**

**fax (516) 538-0203**

**website: [www.awardsandmore.net](http://www.awardsandmore.net)**

GLASS & ACRYLIC AWARDS • SIGNS  
BADGES • CUSTOM PINS & PATCHES  
SILVER PLATES & BOWLS • RIBBONS  
PLAQUES • SPORTS RESIN FIGURES  
DESK & WALL CLOCKS • TROPHIES  
LAMINATION • STATUES & FIGURES  
BRONZE PLAQUES • GOLF AWARDS

WE HAVE AWARDS FOR  
FIRE FIGHTER, POLICE, EMS,  
COMMUNITY SERVICE, CHURCH,  
LIFETIME ACHIEVEMENT, RAFFLE CHAIRMAN  
FREE THROW CONTESTS  
ART & POSTER , PANCAKE BREAKFAST,  
SPAGHETTI DINNER, ETC...  
MORE THAN CAN POSSIBLY  
BE LISTED HERE.

ANY ORGANIZATION MEDALLION  
CAN BE PLACED ON ANY OF THE ITEMS  
ON THE FOLLOWING PAGES

MANY MORE ITEMS AVAILABLE ON OUR WEBSITE:  
[WWW.AWARDSANDMORE.NET](http://WWW.AWARDSANDMORE.NET)  
ALL OF WHICH CAN BE CUSTOMIZED  
FOR THE KNIGHTS OF COLUMBUS

# BADGES

Our Badges Use A Hard Enamel Cloisonne Emblem For  
Council, 4th Degree, PGK, Columbiettes, Lady's Auxiliary, DD, DW & Squire Badges  
Not A Paper Sticker



**STYLE - STD**



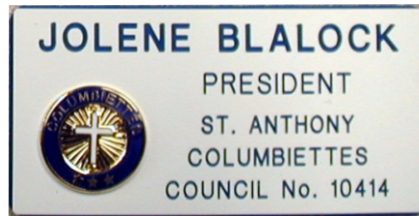
**STYLE - PGKBDG**



**STYLE - NEW\***



**STYLE - HG**



**STYLE - PIN-ON**  
Magnetic Back Available

Fold over pocket badges



**STYLE - 2 EMB\*\***

Badges Can Be Designed To Your Specifications

We Can Engrave Custom Logo On Badges,  
Such As Board Of District Deputies,  
Chapter or Conference, Agency Etc.



**\* Style-NEW**

Is Designed With The Name In Bolder Letters And Is Offset  
So That The Name Is Not Covered By Your Jacket Lapel

**\*\* Style 2EMB**

Adds A Second Emblem, Pro-life Rose, Etc. At An Additional Cost.

We Can Supply:

4th Degree Emblem: +\$2.00

Prolife Cloisonne Rose: +\$2.75

Our Past Grand Knight Badges Use A  
Custom Made Cloisonné PGK Emblem

3rd Degree ,4th Degree Or Our Custom Past Grand Knight  
Cloisonné Available On All Styles

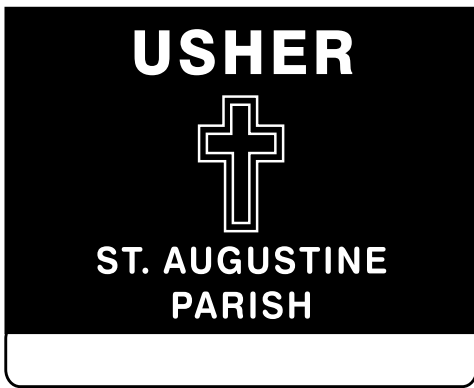
# USHER & CHURCH BADGES



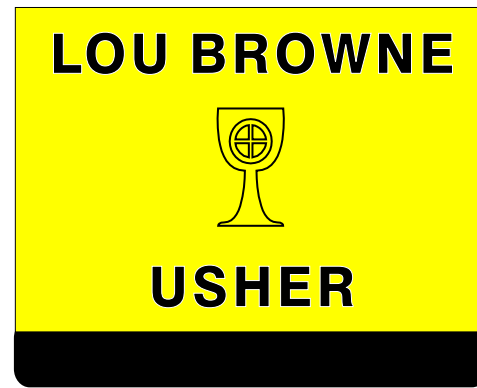
**Style S1** Slip-On



**Style S2** Slip-On



**Style S3** Slip-On



**Style S4** Slip-On



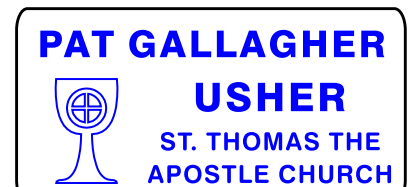
**Style P1** Pin-On 3/4" x 3"



**Style P2** Pin-On 1.25" x 3"



**Style P3** Pin-On 1.25" x 3"



**Style P4** Pin-on 1.5" x 3"

*Badge styles can be changed to your specifications  
See Badge Description Page for available colors*

**Stock Logos:** (Call for availability of other logos or to use your own)



See Usher Badge order form in back of brochure

# BADGES FOR

COUNCIL, CONFERENCE, CHAPTER, STATE OFFICERS,  
COMMITTEE CHAIRMAN, GENERAL MEMBERSHIP,  
HOME ASSOCIATION, CLUB OFFICERS,  
HONOR GUARD, COLOR CORPS.,  
TRUSTEES AND DIRECTORS, AGENCIES, COLUMBIETTES,  
CHARTER, HONORARY OR LIFE MEMBERS , ETC.

WE WILL PRODUCE ANY STYLE BADGE YOU  
DESIRE. JUST SEND US A SKETCH OF THE  
LAYOUT YOU WISH AND WE WILL PRODUCE IT.

## BADGE COLORS

### SURFACE

RED  
RED  
BURGUNDY  
YELLOW  
BRIGHT GREEN  
FOREST GREEN  
AF BLUE (DARK)  
BLUE  
BLUE  
PURPLE  
WHITE  
WHITE  
WHITE  
BLACK  
BLACK  
BLACK  
SILVER  
GOLD

### LETTER

WHITE  
YELLOW  
WHITE  
BLACK  
WHITE  
WHITE  
WHITE  
WHITE  
YELLOW  
WHITE  
RED  
BLUE  
BLACK  
GREEN  
WHITE  
YELLOW  
GOLD  
BLACK  
BLACK



**PGK**



**PGKOAK**



**PGKMRBL**

Gavel Plaque, Cherry or Oak Finish Laminate Board  
 Gavel Plaque, Marble Finish Laminate Board  
 Black or Blue engraving plate

## PAST GRAND KNIGHT, GRAND KNIGHT, CHAIRMAN OR PRESIDENT'S PLAQUES



**PG2442**



**PG2440**



**PG3751**

Gavel Plaque 15"x 18" with metal gavel, walnut shadowbox  
 Gavel Plaque 10"x 13" with metal gavel, walnut shadowbox  
 Gavel Plaque, 12" x 9", with metal gavel, Rosewood, Piano Finish Board

**We also have gavels, sounding blocks & a variety of gavel plaques**

## KNIGHT PLAQUE

11 x 14 Inch Solid Walnut Plaque  
With Standing Metal Knight On Pedestal  
K of C Medallion  
Blue Plate With Gold Letters & Border  
(See Text Page For Stock Message)

9½" x 12½"

**KOTY4**

11" x 14"

**KOTY3**



## EBONY KNIGHT PLAQUE

10.5" x 13" Ultra-Gloss Black Laquer Piano Finish  
Plaque With Gold Standing Knight On  
Pedestal, Engraved Logos And  
Black Plate With Gold Letters & Border

**KOTYBK**



Also Available  
on  
Rosewood  
Laquer  
Piano Finish

**KOTYROSE**

## RECOGNITION AWARD PLAQUE

9 x 12 cherry finish plaque  
full color KofC logo  
black plate with white letters.

Available in 2 sizes.

Also available for a variety of sports

### MP325D



## PERPETUAL PLAQUES

perpetual plaques are available in a wide variety of sizes and styles. they are perfect for listing past officers, memorializing deceased members remembering council events. etc.

See our website:  
[www.awardsandmore.net](http://www.awardsandmore.net)





**FAMILY OF THE YEAR**  
 13 x 10½ CHERRY FINISH PLAQUE  
 WITH FULL COLOR HOLY FAMILY  
 BLACK PLATE WITH GOLD LETTERS AND BORDER

**FOTY**

Also available on  
 Ebony Pianowood (FOTYEBONY) and  
 Rosewood Pianowood (FOTYROSE)  
 At Additional Cost

We Can Create A Custom Award  
 Featuring Your Council's  
 Patron Saint, Namesake  
 or Any Individual

**FR. MCGIVNEY**

12 x 9 Cherry Finish Plaque  
 With Full Color Photo of Fr. McGivney  
 White Plate With Black Letters, Color Logos  
 Can Be Changed For Any Saint or Person

**MCGIV**



**COUNCIL OR COLUMBIETTE  
 MEMBER & DECEASED MEMBER**

7 x 5 Cherry Finish Plaque  
 With Torches & Full Color Logo  
 Gold Plate With Black Letters  
 Minimum Order: 6  
 Sold in lots of 6 pcs.

**DEC**





## RESIN KNIGHT

4" Inch Resin  
Knight Figure

**RS483**



## RESIN KNIGHT ON BASE

4" Resin Knight Figure  
On A Wood Laminate Base  
Overall Height 7 "

**RS483B**

## FREETHROW

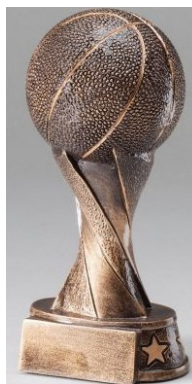
A wide variety of  
trophies, resins,  
plaques and medals for  
Freethrow and other sports"



## KNIGHT FIGURE ON BASE

Knight Figure On A  
Jet Black Base & Gold Plinth  
Overall Height 9"

**KTB**



## RESIN KNIGHT ON BASE

12" Inch Resin Knight Figure  
On Wood Laminate Base  
Overall Height 17"  
Plain Or With  
3rd Or 4th Degree Emblem

**802WAB**



## RESIN KNIGHT

12" Inch Resin Knight Figure  
Plain Or With  
3rd Or 4th Degree Emblem

**802WA**



**CRY022**  
9" Crystal Cross  
Black Crystal Base  
\$95.00 + Engraving



**CRY522**  
9" Crystal Cross  
Blue Crystal Base  
\$95.00 + Engraving



**ACRO2**  
Solid Alder Wood Cross  
8" x 13.5"  
\$40.00 + Engraving



**PCRO2**  
Rosewood Piano Finish Cross  
8" x 13.5"  
\$45.00 + Engraving





Boy Scout & Eagle Scout Awards



## LONG ISLAND PLAQUE

Gold Flexbrass Long Island  
on 12" x 9" Plaqueboard  
Other colors and finishes available

**LIR9**



Knight and Bobble Head Trophies

We Have Awards For  
Fire Fighter, Police, EMS,  
Community Service, Church,  
Lifetime Achievement, Raffles  
Free throw Contests  
Art & Poster , Pancake Breakfast,  
Spaghetti Dinner, Etc.

More than can possibly  
be listed Here.



## RESIN MICROPHONES

Perfect For  
Auctioneer, DJ  
Master of Ceremonies  
Event Chairman  
Guest Speaker, Etc



505 Uniondale Avenue  
 Uniondale, NY 11553  
 tel 516.538.0705  
 fax 516.538.0203  
 awardsandmore@verizon.net  
 www.awardsandmore.net



2 inch mylar logo in holder with adhesive back	\$5.00
1 inch cloisonné medallion in holder with adhesive back	\$5.00
1 inch cloisonné medallion with adhesive back	\$4.50
¾ inch cloisonné medallion with adhesive back	\$4.00
¾ inch cloisonné medallion with pin back	\$5.00
1 ½" x 3" badge with pin back *	\$7.00
1 ½" x 3" badge with magnetic back *	\$9.00
Past President Gavel Plaque	#35.00 + text

\* Badges are available in a variety of color combinations

We carry a full line of Knights of Columbus, Columbiette, Ladies Auxiliary and Squire awards, recognition and identification items.

Plaques, Trophies, Custom Awards, Clocks, Desk Sets, Gavels, Past President Plaques, Badges, Medals, Ribbons, Pens, Crystal, Glass, Signs, Banners.

You can see our Knights of Columbus/Columbiette catalog on our website:  
[www.awardsandmore.net](http://www.awardsandmore.net)

Call: 516.538.0705, Fax: 516.538.0203 or email [awardsandmore@verizon.net](mailto:awardsandmore@verizon.net)

***Augie Daurio, Brother Knight since 1955***



# PRICE LIST

PAGE	ITEM	DESCRIPTION	PRICE
1	STD	Slip-on Badge – Standard Style	11.00
	NEW	Slip-on Badge – Modern Style, bolder name not covered by lapel	11.00
	PGKBDG	Gold Past Grand Knight Badge with customer PGK Cloisonné	1.00
	HG	Honor Guard, Color Guard tec., Central emblem	11.00
	2EMB	Slip-on Badge, Modern Style, space for 2 <sup>nd</sup> emblem or Pro Life Rose	11.00 + emblem <sup>^</sup>
	PIN ON	Pin-on badge – Pin fastener (Add \$2.75 for magnet fastener)	7.50
2	S1 – S4	Slip on Usher Badge	10.00
	P1	Pin-on Usher Badge, Style P1 (Add \$2.75 for magnet fastener)	5.50
	P2	Pin-on Usher Badge, Style P2 (Add \$2.75 for magnet fastener)	6.50
	P3	Pin-on Usher Badge, Style P3 (Add \$2.75 for magnet fastener)	7.00
	P4	Pin-on Usher Badge, Style P4 (Add \$2.75 for magnet fastener)	7.50
4	PGK, PGKOAK	Past Grand Knight Gavel Plaque, Cherry or Oak Finish Laminate Board	40.00 + engraving*
	PGKMRBL	Past Grand Knight Gavel Plaque, Marble Finish Laminate Board	45.00 + engraving*
	PG2440	Gavel Plaque 10" x 13" with metal gavel, walnut shadowbox	99.00 + engraving*
	PG2442	Gavel Plaque 15" x 18" with metal gavel, walnut shadowbox	150.00 + engraving*
	PG3751	Gavel Plaque 12" x 9" with metal gavel, rosewood, piano finish bard	75.00 + engraving*
5	KOTY3	Knight of the Year, 11" x 14" Walnut Plaque with knight	69.00 + engraving*
	KOTY4	Knight of the Year, 9.5" x 12" Walnut Plaque with knight	59.00 + engraving*
	KOTYBK	Knight of the Year, 10.5" x 13" Ebony Piano Lacquer Plaque with knight	75.00 + engraving*
	KOTYROSE	Knight of the Year, 10.5" x 13" Rosewood Piano Lacquer Plaque with knight	75.00 + engraving*
6	MP325D	Knights of Columbus logo, 9" x 12" cherry finish board	25.00 + engraving*
		Perpetual plaques, see website or showroom for sizes and styles	
7	FOTY	Family of the Year with Holy Family Print – Stock Text	70.00
	MCGIV	Father McGivney, 12" x 9" Cherry finish (Add \$10 for Mahogany finish)	50.00 + engraving*
	DEC	Deceased Member Casket plaques, (Minimum order 6 pcs, in quantities of 6)	12.50 each (Min 6)
8	RS483	Pewter & Gold color resin Knight's helmet figure	15.00 + engraving*
	RS483B	Pewter & Gold color resin Knight's helmet figure on wood laminate base	25.00 + engraving*
	KTB	Knight Figure On A Jet Black Base & Gold Plinth	18.00
9	802WA	Resin Knight Figure, Gold (Silver is special order and will take more time)	95.00 + engraving*
	802WAB	Resin Knight Figure, Gold on cherry laminate base	135.00 + engraving*
10	BSA	Boy Scout, Eagle Scout resin figure	20.00 + engraving*
	MIC1, MIC2	Resin Microphone figure	20.00 + engraving*
	LIR9	Gold flexbrass Long Island on 12" x 9" board. Several finishes available.	45.00 + engraving*
	BOBBLE	Knight bobble head figure	18.00 + engraving*

## Call for Pricing on These And Many Other Items

<sup>^</sup> Cloisonné Rose added, + \$2.75; or 4<sup>th</sup> Degree Cloisonné added, + \$2.50 (4<sup>th</sup> Degree Cloisonné standard on all Assembly Badges)

Magnetic Back for Badges +\$2.75

\* Engraving \$0.20 per character, do not count spaces

Prices subject to change without notice. Orders placed in May and June will take longer than usual.

## SCHOLASTIC PROMOTIONS AWARDS & MORE

505 Uniondale Avenue, Uniondale, NY 11553

tel: 516.538.0705 fax: 516.538.0203

web: [www.awardsandmore.net](http://www.awardsandmore.net) email: [awardsandmore@verizon.net](mailto:awardsandmore@verizon.net)



505 Uniondale Avenue, Uniondale, NY 11553-2235  
 TEL (516) 538-0705 FAX (516) 538-0203  
 awardsandmore@verizon.net

**Ship By**  Residential Address  **Will Pick Up**  
**UPS To:**  Commercial Address

Name \_\_\_\_\_  
 Street \_\_\_\_\_  
 City \_\_\_\_\_ State \_\_\_\_\_  
 Phone \_\_\_\_\_ Zip \_\_\_\_\_

**All Badges Shipped By UPS**  
 UPS Will Not Deliver To P.O. Boxes

**NAME BADGES**

**Slip-on or Pin-on Pocket Badges with Hard Enamel Cloisonne Emblem**

Style: **Pin**



**4 Lines**  
 Columbiettes,  
 Ladies Auxiliary. Etc.

1 1/2" x 3"

Pin-On Badge **\$7.00**

Style: **STD**



Council Name  
 Council No.

4 Lines

Style: **NEW**



Council Name  
 Council No.

5 Lines

**BOLDER NAME**  
 offset so that it will  
 not be covered  
 by your lapel

Style: **2EMB**



Council Name  
 Council No.

5 Lines

Space for a  
 4th Degree, Pro-Life Rose, etc.  
 Second Emblem additional.  
 4th Degree Emblem+\$2.00  
 or  
 Pro-Life Cloisonne Rose+\$2.75

Style: **HG**



6 Lines

Assembly Badges  
 Honor Guard,  
 Color Corp, etc.

**\$11.00 Each**

Magnetic Fastener: Add \$2.50

Additional Lines: Add \$1.00 Per Line

Prices Do Not Include Shipping & Handling

**Council or Assembly name & number:**

\_\_\_\_\_

**Badge Color** \_\_\_\_\_ **Letter Color** \_\_\_\_\_

**GOLD & BLACK PAST GRAND KNIGHT BADGE**



Place an "X" in the box if your council's  
 Past Grand Knight badges are Gold & Black.  
 If the box is NOT marked PGK Badges will be  
 produced in council badge colors

We use our own custom-made PGK emblem on our PGK Badges

Style	Name	!!! PRINT CLEARLY, ONE LETTER PER SQUARE* !!!										Position	
1													
2													
3													
4													
5													
6													
7													
8													
9													
10													
11													
12													
13													
14													
15													
16													

\*We will not be responsible for misspellings on **HANDWRITTEN** names on your order, there will be a charge for redoing these badges. Please remember we don't know these people, so don't assume we know how to spell their names. Tax will be charged to any council that has not supplied us with a copy of their tax exempt certificate. Prices subject to change without notice.

**ORDERS PLACED DURING APRIL, MAY & JUNE MAY REQUIRE 4-5 WEEKS FOR PRODUCTION**


Shipped Badges will be sent by US Mail or UPS. Design changes or additional lines added to stock badge styles will incur additional costs.



# STANDARD TEXT

Plaques can be made with any text you desire, these examples are the Stock Text that Knight of the Year, Past Grand Knight and Family of the Year will use unless other text is requested

**KNIGHT OF THE YEAR**  
{ YEARS }



**{NAME}**

In Recognition Of Your Tireless Efforts And Outstanding Accomplishments In Furthering All The Principles Of The Knights Of Columbus

THE OFFICERS AND MEMBERS OF  
{ COUNCIL NAME & NUMBER }

**STOCK TEXT FOR  
KNIGHT OF THE YEAR  
KOY3, KOY4, KOYBK, KOYROSE**

Presented To  
**{NAME}**  
**GRAND KNIGHT {YEARS}**  
For His Outstanding Leadership And Dedicated Service To Our Council

OFFICERS AND MEMBERS OF  
{NAME}  
COUNCIL No. {NUMBER}

**STOCK TEXT FOR PGK  
PGK, PGKOAK, PGKMRBL**

KNIGHTS OF COLUMBUS  
[ COUNCIL NAME ]  
COUNCIL No. {NUMBER}

**FAMILY OF THE YEAR**  
**{YEARS}**

Presented To  
**{NAME}**

For Your Dedication To The Spirit Of Family In Columbianism

{NAME}, Grand Knight

**STOCK TEXT FOR FAMILY OF THE YEAR  
FOTY**

